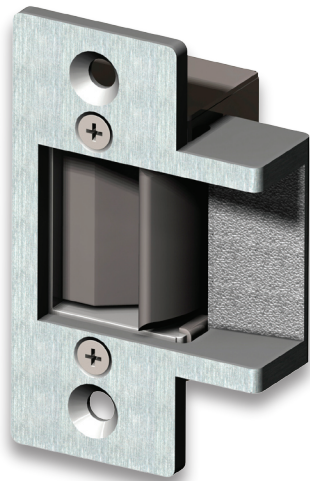


3000 Series Low Profile Strikes



3234



3234W

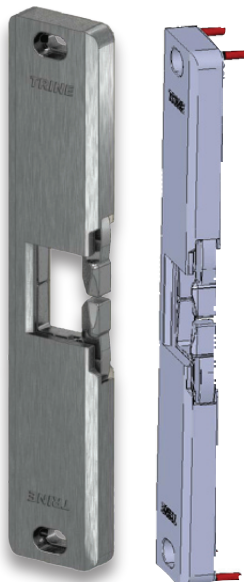


3478

- Often requires up to 70% less cutting of the frame face as compared to conventional electric strikes
- An electric strike with a 1" total backset for installation without the removal of most dust boxes.
- Holding Force: 1200lbs
- Life Cycle: 500,000
- Fail secure
- Stocked intermittent duty only
- All stainless steel locking mechanism

Mfg #	Finish	Voltage	Fits	EZ #
3234 12VDC26D	Satin Chrome	12VDC	ANSI 115.3 2-3/4" "T" Style	074387
3234 24VDC26D	Satin Chrome	24VDC	ANSI 115.3 2-3/4" "T" Style	074389
3234W24DC26D	Satin Chrome	24VDC	Standard 2-1/4" Full Lip	074393
3478 12DC32D	Satin Stainless Steel	12VDC	ANSI ASA 4-7/8" Commercial	076582
3478 24DC32D	Satin Stainless Steel	24VDC	ANSI ASA 4-7/8" Commercial	076583

1/2" Thin Rim Exit Device Strike



- 1/2" Profile is 1/4" thinner than standard surface mount rim exit device strikes for applications where the door to frame gap is minimal
- Voltage: Built in electronics allow the strike to operate with DC voltages between 11-30 volts.
- Built-in surge and kick-back protection
- Patented anchoring system provides extra strength
- 1/8" steel spacer included when 5/8" profile is required.
- Grade 1 all stainless steel construction
- Requires 500 mA pull-in & 178mA holding current @ 12VDC, 255mA pull-in & 84mA @ 24VDC
- Measures: 9"H x 3/4"W x 1/2"D

4850

Mfg #	EZ #
4850 32D	100291

Grade 1 ASA Strike



- Face plate: ANSI 1-1/4" x 4-7/8"
- Fail Secure or Fail Safe, field reversible
- All stainless steel construction
- Durability: 1,000,000 life cycles
- Holding force: 2000 lbs. UI tested
- Cavity Measurements: 7/8"D x 1-1/2"H x 3/4"W
- Up to 1" throw with 1/8" door gap.
- Stocked in satin chrome finish
- 24VDC @ 150mA

EN400

Mfg #	EZ #
EN400 32D24VDC	076841

Trine