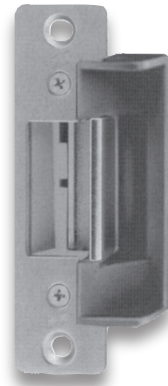




EC141, EC145, & EC171 Strikes for Aluminum Doors & Centerline locksets

EC141 & EC145 Series



EC171 Series

- UL 1034 Burglary Resistant
- Strike depth: 1-1/2"
- UL tested to 500,000 cycles.
- All models require 1/8" door gap to accommodate maximum latch projection
- EC141 & EC171 are stocked fail secure only.
- EC145 are field selectable for fail safe or fail secure mode.
- Continuous operation requires DC current.

Select 1 Faceplate & 1 Body from Table Below

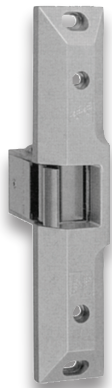
Mfg #	Size	Frame	Corners	EZ #
ECR4 630	1-1/4 x 4-7/8	Aluminum/Wood	Round	079529
ECS4 630	1-1/4 x 4-7/8	Steel/Wood	Square	079530
ECR5 630	1-1/8 x 5-7/8	Aluminum	Round	079531
ECR6 630	1-1/4 x 6-7/8	Aluminum	Round	079532
ECR7 630	1-7/16 x 7-15/16	Aluminum/Wood	Round	079533

EC171 Series electric strikes allow installers to adjust the strike pivot horizontally up to 1/8" for precise alignment.

Select 1 Body & 1 Faceplate from Table Above

Mfg #	Description	ANSI	Static Strength	Dynamic Strength	Factory Tested Cycles	Latch Projection	EZ #
EC141 12A/D630	12VAC/DC Body	Grade 2	1000 lbs	50 ft-lbs	1,000,000	5/8" to 3/4"	079520
EC141 24A/D630	24VAC/DC Body	Grade 2	1000 lbs	50 ft-lbs	1,000,000	5/8" to 3/4"	079521
EC145 12 24A/D630	12 or 24VAC/DC Body	Grade 1	1500 lbs	70 ft-lbs	1,500,000	5/8" to 3/4"	079522
EC171 12D630	12VDC Body	Grade 3	1000 lbs	33 ft-lbs	1,000,000	1/2" to 5/8"	079523
EC171 24D630	24 VDC Body	Grade 3	1000 lbs	33 ft-lbs	1,000,000	1/2" to 5/8"	079524

EC601 Strikes for Exit Devices



- Designed for rim or surface mounted exit devices in wood or metal frames. Accommodates all Pullman type latches with up to a 3/4" throw. Offers horizontal adjustment for proper alignment.
- BHMA Grade 2
- Continuous duty operation requires DC current
- Endurance rating 500,000 UL-tested, 1,000,000 factory tested
- UL 1034 Burglary Resistant
- 1,500 lbs. Static strength
- 50 ft-lbs. Dynamic strength
- Fail secure
- For right or left-hand doors
- Finish: Gray

Mfg #	Voltage	EZ #
EC601 12A/D628C	12VAC/DC	079525
EC601 24A/D628C	24VAC/DC	079526

EC15B Economy Strike



- Ideal for light-duty applications with cylindrical locksets with a 1/2" to 5/8" throw (5/8" requires 1/8" door gap) in metal, wood, or aluminum frames.
- Fail secure or fail safe
- 8-16 VAC

Mfg #	EZ #
EC15B8 16A626	079527