



Yale

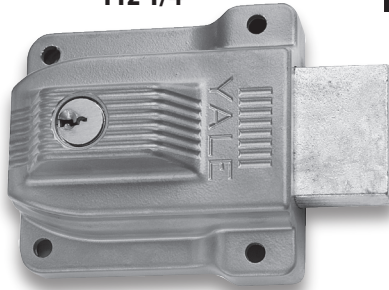


80

80 Night Latch

- Inside: Bolt can be deadlocked or held back by slide button, rendering the lock inoperable by key or knob.
- Supplied with rim cylinder
- For doors 1-1/4"-2-1/4" thick.
- 2-3/8" Backset with 1/2" throw latch..

112 1/4



112 Single Cylinder

- Inside: 1-1/8" bolt can be deadlocked or held back by slide button, rendering the lock inoperable by key or knob.
- Supplied with rim cylinder
- For doors 1-1/4" to 2-1/4" thick.
- Supplied with strike for inswinging door 2 3/8" Backset

112 1/4 Double Cylinder

As above but bolt is operated by key inside & outside.

Rim Locks



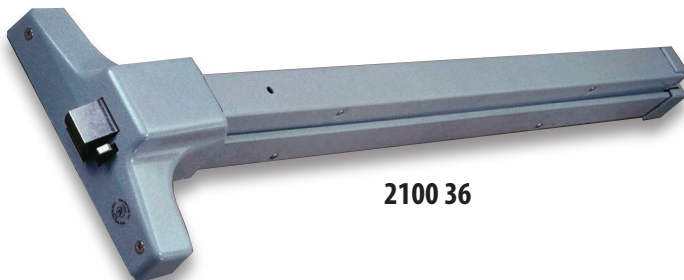
197

197 Jimmy Proof

- Inside: 90° turn of the thumbturn locks or unlocks deadbolt.
- Deadbolt has two hardened steel pins that interlock with the strike.
- For doors 1-1/4" to 2-1/4" thick.
- 2-3/8" backset
- Supplied with rim cylinder

Mfg #	Description	EZ #
80	Night Latch	026276
112	Rim Deadlock	014413
112 1/4	Double Cylinder Rim Deadlock	014414
197	Single Cylinder Jimmy Proof	014438

Rim Exit Device & Trim

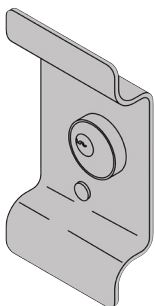


2100 36

- Certification: UL/cUL Listed, ANSI Certified: A156.3 Type 1, Grade 1
- 3/4" Throw deadlocking stainless steel Pullman latchbolt
- Door Opening Width: 30 to 36"
- For 1-3/4" doors with minimum stile width of 4-1/2".
- Latchbolt: 3/4" deadlocking stainless steel Pullman-type
- Finish: Sprayed Aluminum

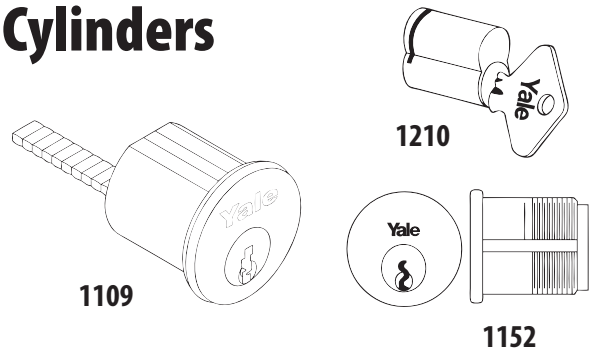
217F SB

- Through-bolted for 1-3/4" door
- Finger Pull Dimensions: 3-1/2" x 6-3/4" x 1/8"



Mfg #	Description	EZ #
2100 36 689	Exit Device	069759
217F SB	Pull Trim	069760

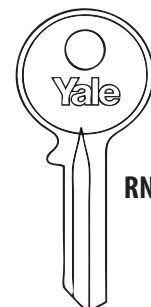
Cylinders



Mfg #	Description	Keyway	EZ #
1109GA26D	Rim Cylinder	GA	026292
1152 1 1/8GA26D	1 1/8" Mortise Cylinder	GA	014420
1210GA26D	Interchangeable Core.	GA	060971

Keyblanks

Mfg #	Keyway	EZ #
RN11GA	6 Pin GA	014370



RN11GA