

PEMKOHINGE™ Continuous Aluminum Hinges Pemko



Continuous Geared Hinges

- PemkoHinge™ consists of two full-height, paired and inter-meshing geared leaves. Each geared leaf rotates evenly from top to bottom riding on wear resistant Delrin®-Teflon® bearings.
- Held together by a full-length channel cap the assembly easily supports heavy vertical load and supports the load uniformly across door and frame.

- With a continuous hinge, typical alignment problems such as door sag and binding are eliminated.
- Only a 1/2 lb. or less operating force required to operate most doors which makes continuous hinges ideal for doors used by the physically challenged.
- The continuous hinge acts as reinforcement for both door and frame. A high degree of security can be achieved for exterior openings or restricted spaces

- by using a continuous hinge that means the common gap between the door and frame is sealed, which provides security against prying.
- Supplied with #12-24 size fasteners to securely fasten the hinge to door & frame.
- All hinges are stocked 83". The standard duty supports doors up to 280 lbs with 14 bearings. The heavy duty model supports 540 lbs with 27 bearings.

Illustrations, Applications, & Description

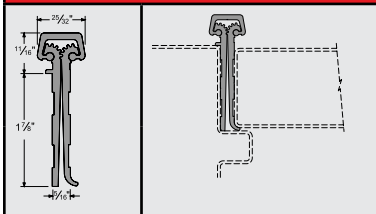
Mfg #

Duty

Finish

EZ #

Full Mortise

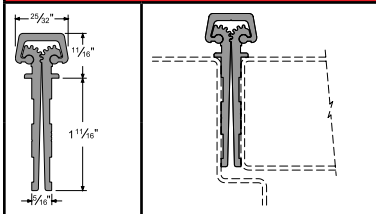


- Full surface units are designed mainly for new door applications, and are applied to conceal both leaves
- Door Clearances: Frame Side 5/16", Latch Side 1/8", Top Side 1/8"

CFM83 Standard Clear 086616

DFM83 Standard Dark 086617

Full Mortise Short Leaf Flush

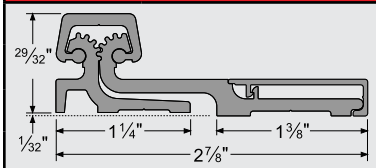


- Designed for use with doors which range between 1-3/4" to 2-1/4".
- Designed for bifold applications to keep the faces of the doors flush (not illustrated).
- Door Clearances: Frame Side 5/16", Latch Side 1/8", Top Side 1/8"

CFM83SLF Standard Clear 086614

DFM83SLF Standard Dark 086615

Full Surface



- Full-Surface units are designed mainly for retrofit work, and are applied to the exposed surfaces of the door and frame.
- Door Clearances: Frame Side 0" to 1/8", Latch Side 1/8", Top Side 1/8"

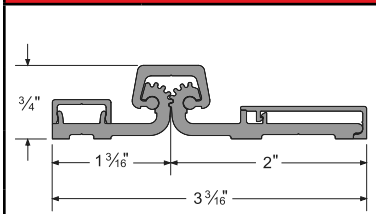
CFS83 Standard Clear 073935

DFS83DU Standard Dark 029526

CFS83HD Heavy Clear 086610

DFS83HD Heavy Dark 086611

Full Surface Center Pivot



- Full-Surface Center Pivot units are designed mainly for retrofit work and are applied to the exposed surfaces of the door and frame.
- Full-Surface Center Pivot units easily replace butt hinges since no door or frame adjustments are necessary and are more versatile with restricted frame faces.
- Door Clearances: Frame Side 0" to 1/8", Latch Side 1/8", Top Side 1/8"

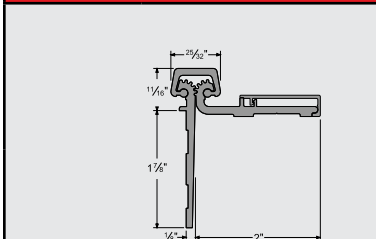
CFS83CP Standard Clear 081629

DFS83CP Standard Dark 084072

CFS83CP-HD Heavy Clear 086284

DFS83CPHD Heavy Dark 086613

Half Surface



- Half Surface units are designed mainly for retrofit work, and are applied to the exposed surface of the door and the frame rabbet.
- Designed for use with hollow metal frames, where the inset conforms to S.D. I. specifications.
- Allows for adjustments in order to properly align edge of the door to the frame.
- Door Clearances: Latch Side 1/8", Frame Side 1/8", Top Side 1/8"

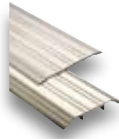
CHS83HD Heavy Clear 090080

DHS83HD Heavy Dark 090081

Pemko



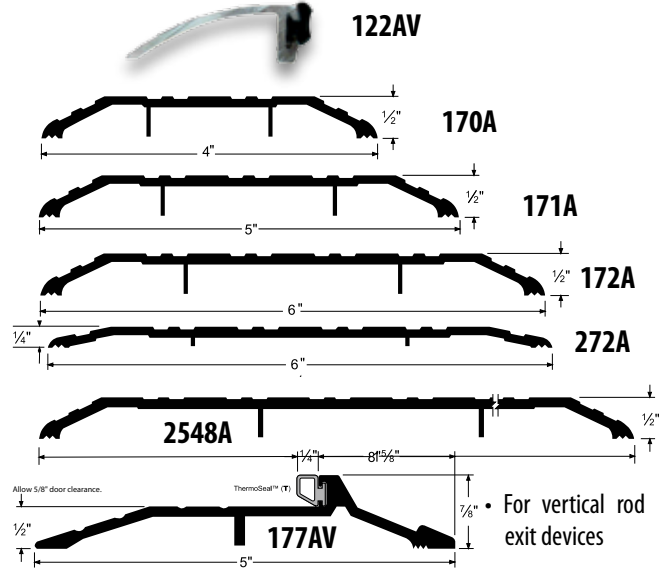
Thresholds



- Mill finish aluminum.
- Symmetrical shapes designed to span a given area, usually under a door.

- Saddle thresholds are supplied predrilled, with #10-24 Phillips, flat head machine screws of appropriate length

Mfg #	Type	Length	Height	Width	EZ #
122AV36	Bumper with Vinyl	36"	1/2"	1-1/2"	086603
170A36	Standard	36"	1/2"	4"	074927
170A72	Standard	72"	1/2"	4"	084986
171A36	Standard	36"	1/2"	5"	086594
171A72	Standard	72"	1/2"	5"	086595
172A36	Standard	36"	1/2"	6"	086596
172A72	Standard	72"	1/2"	6"	086597
2548A72	Standard	72"	1/2"	8"	086598
177AV36	Latching with Vinyl	36"	7/8"	5"	086601
177AV72	Latching with Vinyl	72"	7/8"	5"	086602
272A36	Low Profile	36"	1/4"	6"	086599
272A72	Low Profile	72"	1/4"	6"	086600



Pemko

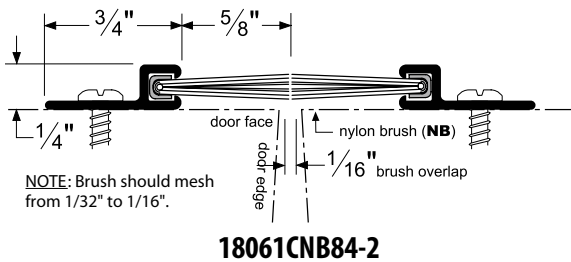
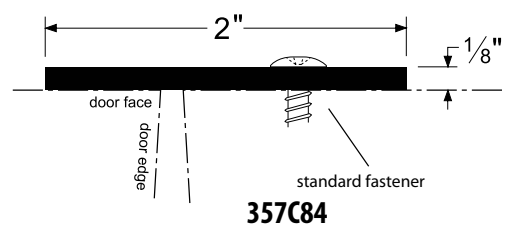
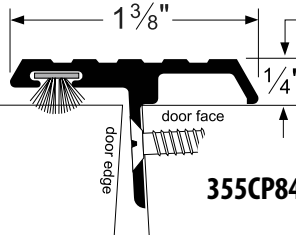
Astragals



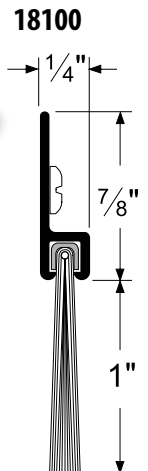
- Astragals and meeting stiles on double doors often present problems because of complex conditions and requirements.

- Punched with slotted holes for adjustment.
- All stocked clear anodized, 84" long with brush products being supplied with gray brush.

Mfg #	Type	EZ #
18061CNB84-2	Split Astragal Set with Brush	086593
355CP84	Overlapping T Astragal with Brush	086592
357C84	Flat Astragal	084984



Mfg #	Width	Finish	EZ #
18100CNB36	36"	Clear	086590
18100DNB36	36"	Duronodic	101198
18100CNB48	48"	Clear	086591



Brush Sweep Gasketing

- All UV stabilized brush seals consist of densely compressed nylon filaments encased in high quality aluminum retainers.
- Suitable for hollow metal and wood door applications.
- All brush seals greatly reduce the infiltration of light, air, wind, rain, and snow and prevent heat loss as well as controlling the penetration of smoke and fumes.
- Supplied with #6 x 5/8" stainless steel sheet metal screws.

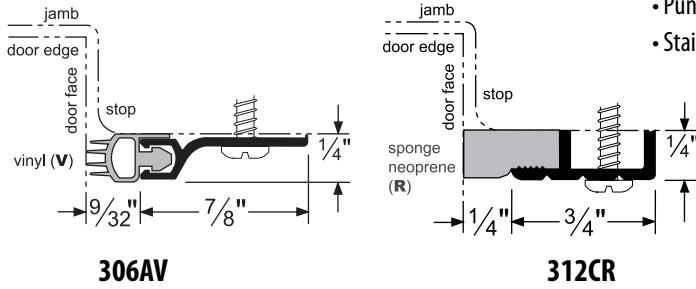
- The dense nylon filaments conform to the contours of every sealing surface, providing a superior seal with extremely low closing force.
- Brush remains flexible down to -40°F and has a melting point above 400°F.
- Punched with slotted holes for adjustment.
- Stocked in clear anodized or dark anodized with black brush.

Perimeter Gasketing, Door Bottoms, & Louvers Pemko

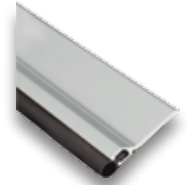


Perimeter Gasketing Kit

- Rigid jamb weatherstrip shown mounted on openings with 1/16" gaps; however stocked weatherstrip can seal gaps up to the 1/4", the depth of the seal material.
- Punched on 6" centers with slotted holes for adjustment.
- Stainless steel fasteners are standard.

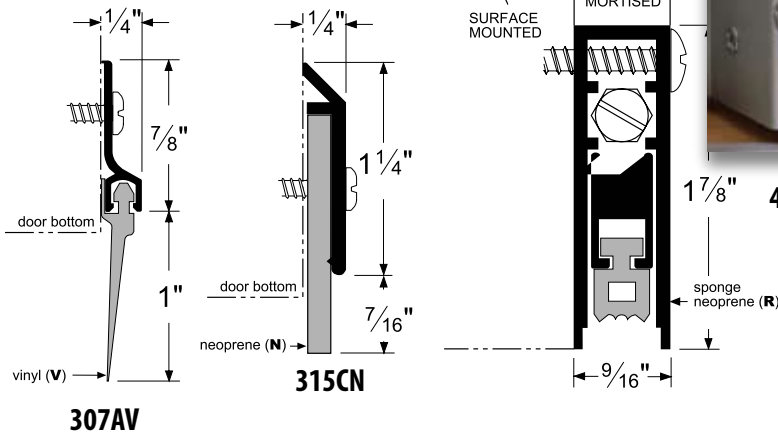


Mfg #	Insert	Length	EZ #
306AV3684	Vinyl	17'	086604
306AV7284	Vinyl	20'	086605
312CR3684	Neoprene	17'	086606
312CR7284	Neoprene	20'	086607



Pemko

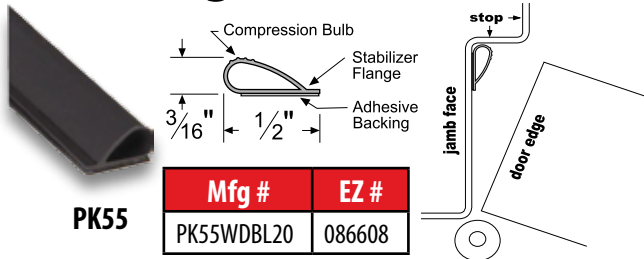
Door Bottoms



- Automatic door bottoms consist of an aluminum case which surrounds the movable drop-bar seal.
- The patented plunger mechanism engages on the hinge side first to actuate the drop-bar seal. This feature prevents the seal from skidding along the floor/threshold while the door is being closed.
- Sponge Neoprene seals up to 3/4" gap under the door.
- Can be trimmed by up to 2".

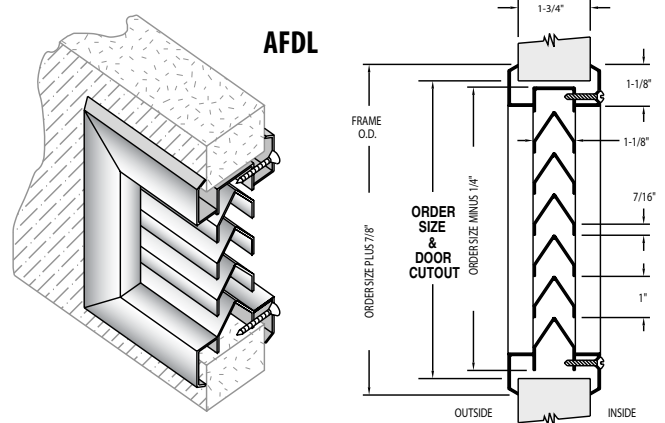
Mfg #	Description	Width	EZ #
307AV36	Vinyl Sweep	36"	086589
315CN36	Neoprene Sweep	36"	074924
315CN48	Neoprene Sweep	48"	084989
4131CRL36	Automatic Door Bottom	36"	086609

Adhesive Smoke/Fire Gasketing



- Excellent resistance to compression set, particularly at elevated temperatures and for extended periods of time.
- Stays flexible between -40°F and 250°F with very high resistance to flex fatigue.
- Seal begins compressing at 3/16" and compresses to seal up to a 1/16" gap.
- Outstanding ozone resistance rating.
- Smoke tested in accordance with UL1784-01; meets the requirements of NFPA 105 "Standard for the Installation of Smoke Door Assemblies and Other Opening Protectives".
- Designed for tighter frames with extremely low closing force.
- Stocked as a 20' coiled length.

Door Louvers



- Construction: 18 GA. Steel frame with 22 GA. Steel louver blades primed grey.
- For 1-3/4" thick interior doors.
- By supplying 50% air flow these louvers are ideal for air exchange.

Mfg #	Size	EZ #
AFDL12X12	12" X 12"	086618
AFDL18X12	18" X 12"	086619
AFDL18X18	18" X 18"	086620