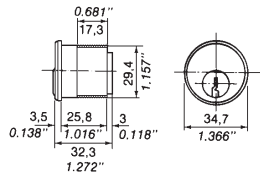
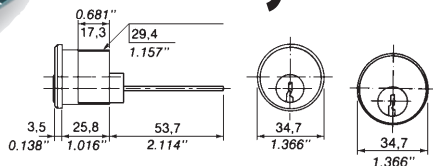


Mortise Cylinders



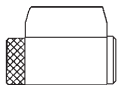
Mfg #	Length	Keyway	Finish	EZ #
6551 1 626SNS	1-1/8"	Twin	Satin Chrome	040105
E6551 1 626SNS	1-1/8"	Exclusive	Satin Chrome	075912
V6551 1 626SNS	1-1/8"	V-10	Satin Chrome	060416

Rim Cylinders



Mfg #	Keyway	Finish	EZ #
V6551 H 626SNS	V-10	Satin Chrome	060420
900209	Mounting Kit		000154

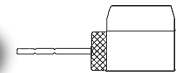
Weiser Deadbolt Cylinders



- 4000 & 9000 Single cylinder deadbolts & entrance gripsets

Mfg #	Keyway	Finish	EZ #
E65681 605SNS	Exclusive	Polished Brass	080346
E65681 626SNS	Exclusive	Satin Chrome	079054

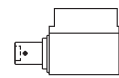
Key-In-Knob & Lever Cylinders



65611 Schlage

- For 6 Pin standard and heavy duty models and B series deadbolts
- Includes cap, pin, spring and three length break off tailpiece.

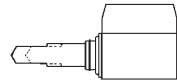
Mfg #	Keyway	Finish	EZ #
65611 626SNS	Twin	Satin Chrome	027925
E65611 626SNS	Exclusive	Satin Chrome	075913
V65611 626SNS	V-10	Satin Chrome	060418



- Heavy duty 7,8, & 9 lines.

65672 Sargent

Mfg #	Keyway	Finish	EZ #
65672 626SNS	Twin	Satin Chrome	028563
E65672 626SNS	Exclusive	Satin Chrome	086762



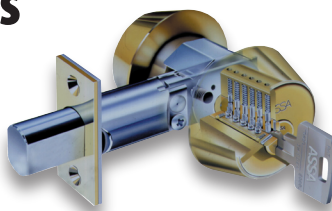
- 6 Line Knob, 7 Line Lever, & 10 Line Lever.
- Two tailpieces included.

65673 Sargent

Mfg #	Keyway	Finish	EZ #
V65673 626SNS	V-10	Satin Chrome	060421

High Security Deadbolts

Mfg #	Keyway	Finish	EZ#
Single Cylinder			
6000 605SNS 2 3/4	Twin	Bright Brass	027917
E6000 605 3F SNS	Exclusive	Bright Brass	079050
E6000 626 3F SNS	Exclusive	Satin Chrome	079049
Double Cylinder			
E6000DC605 3F SNS	Exclusive	Bright Brass	079053
E6000DC626 3F SNS	Exclusive	Satin Chrome	079052
V6000DC605 3FSNS	V-10	Bright Brass	064350



- ASSA Hardhat™ to prevent "ice pick attacks.
- Free spinning guard collars to prevent wrenching
- 1/4" Aircraft strength steel mounting bolts
- Hardened 1" throw bolt

Padlocks



Mfg #	Keyway	EZ #
Non-Key Retaining		
65190B SNS	Twin	028645
Key Retaining		
65191B SNS	Twin	000031
E65191B SNS	Exclusive	079051

- Sturdy design ensures maximum durability even outside
- 1.9" Wide extruded brass body
- Stainless steel .315" diameter shackle has tensile strength of 1.5 tons with 1.1" shackle clearance.
- Drain holes to prevent freezing.